

**ECLIPSE**<sup>®</sup>  
PROTHESENKUNSTSTOFF

THE FUTURE HAS BEGUN. ECLIPSE.



**DENTSPLY**

# ECLIPSE®

## Simplify your denture fabrication – use Eclipse

Eclipse Prosthetic Resin System is a revolutionary new method for making dentures. With Eclipse, denture fabrication is extremely simplified since the lost wax technique is no longer required and there is no need for investing, flasking and boiling-out.

Instead of using wax, dentures are directly built-up with three layers of Eclipse resins (Base Plate, Set-up and Contour Resin). After a successful try-in, dentures are directly processed.

All three Eclipse Resins are MMA-free and handle like wax. The cured resins show outstanding aesthetics and exhibit good mechanical properties.



# ...Prosthetic Resin System includes:

- Resin Materials and accessories

- Base Plate Resin
- Set-up Resin
- Contour Resin

- VLC Processing Unit

- polymerizes materials

- Conditioning Oven

- preheats models/materials

- Melting Pot

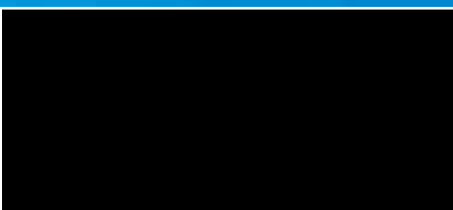
- prepares Contour Resin

- Electric Spatula

- to apply Set-up and Contour Resin

- Hot Air Gun

- replaces flaming



# ECLIPSE®

## Eclipse – a breakthrough in prosthetic resin technology

Eclipse resin is composed of urethane oligomers, a class of materials which enjoys wide acceptance in various dental applications and is free of methyl, ethyl, propyl or butyl monomers. Eclipse's uniquely formulated resins surpass the physical and mechanical properties of earlier urethane materials.

Indications for Eclipse are:



Eclipse is fully repairable and relinable.

All resins are available in three well-known Lucitone shades (Original, Light Pink, Light Reddish Pink) plus Clear.

# ...and the success is yours

## Increase Profit



- eliminate the steps needed for investing, flasking and boiling-out.
- reduce finishing time as there are no sprues, flash or residual investment
- have potential for fewer remakes as problems with fit can be caught early in the treatment process

## Improve Quality



- provide MMA-free dentures for more bio-compatibility
- provide a processed baseplate that offers a superior fitting denture

## Improve Service



- offer an innovative product
- decrease post delivery- adjustments at the dentist
- provide a premium denture

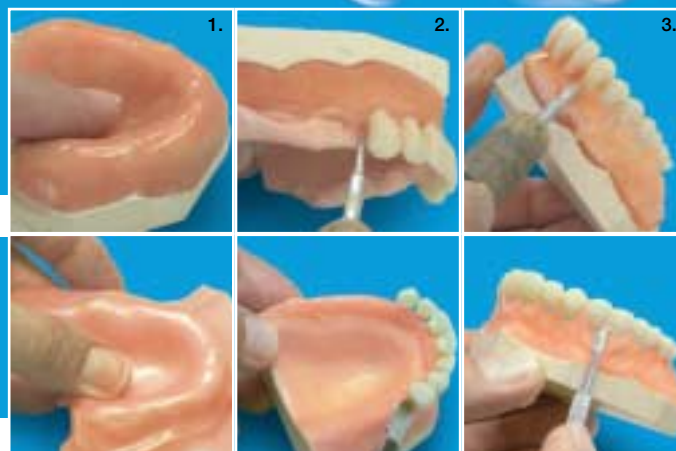
# ECLIPSE®

## How to work with Eclipse

Whereas Eclipse is a revolutionary new method for making dentures, the way to fabricate dentures is very similar to the well-known conventional method.

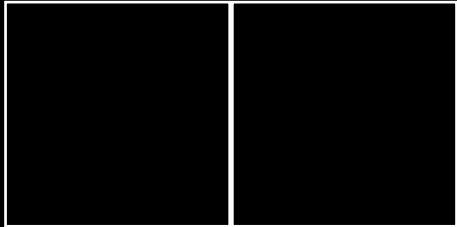
With Eclipse you just have less work and more profit. Base Plate, Set-up and Contour Resin are MMA-free and handle like wax.

1. Form the Eclipse baseplate material over the master model.
2. After the occlusal appointment, arrange the teeth directly onto the processed baseplate while using the set-up resin and electric spatula.
3. Apply a contour resin layer to complete the denture for try-in.
4. After try-in cure the complete set-up in the Eclipse Processing Unit.
5. Completed denture after the final cure.



Eclipse denture

Conventional denture



Eclipse gives you more confidence at the try-in stage and reassures your patient too! With no flasking, it's straightforward technique delivers great dentures time after time.

Andrew Barrs;  
Master Dental Technician, Ashford, UK



## The future has begun. Eclipse.

Eclipse is your ideal chance to increase your profit. Instead of taking time for investing, flasking and boiling-out you are now able to focus on more profitable work.

Simplify your denture fabrication – use Eclipse.



Manufacturer:

**DENTSPLY International Inc.**  
York, PA 17405 - 0872 U.S.A.

EU Representative:

**DeguDent GmbH**  
P.O.Box 13 64 · 63403 Hanau  
GERMANY  
[www.dentsply-degudent.de](http://www.dentsply-degudent.de)

**DENTSPLY**